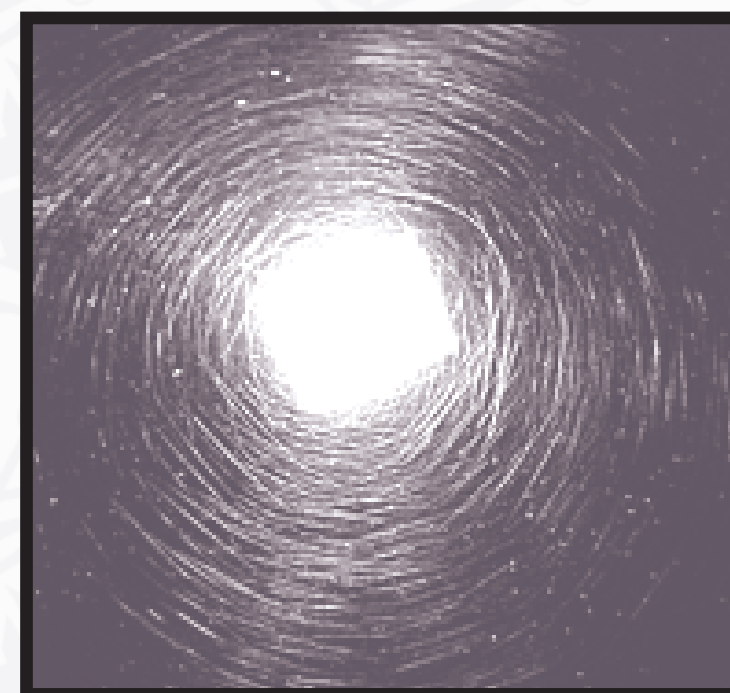


SIMPLE POLISHING OR CORRECTION?

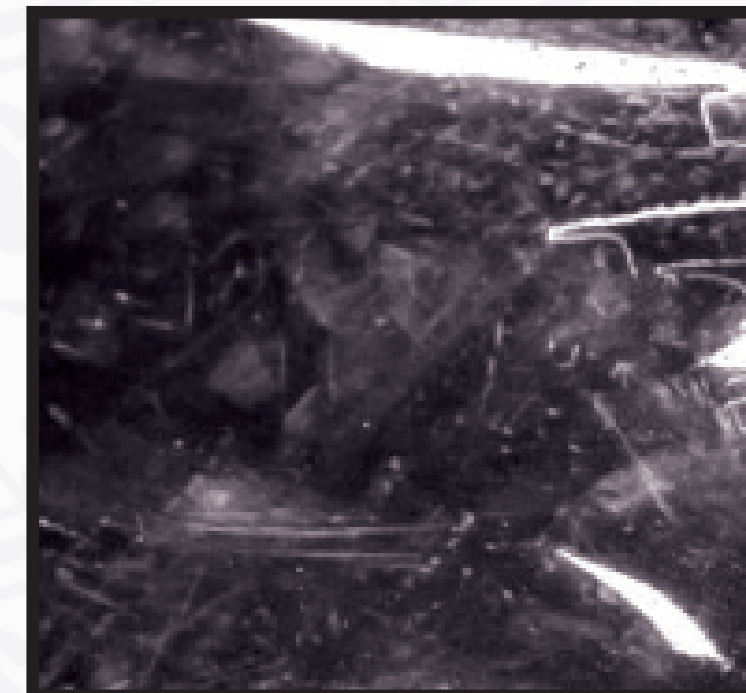
#Labocosmetica®



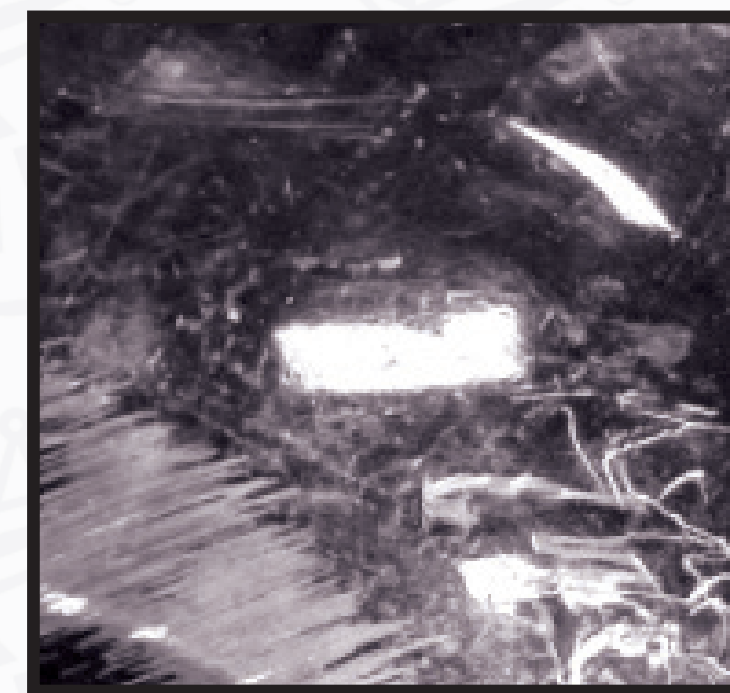
LIGHT SCRATCHES
CAUSED BY A WRONG WASHING



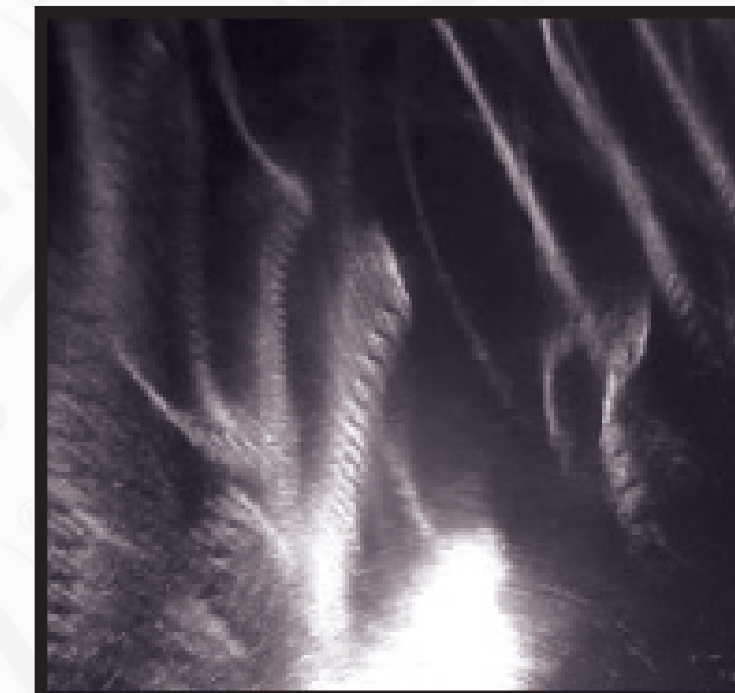
MEDIUM SCRATCHES
CAUSED, FOR EXAMPLE, BY BUSHES



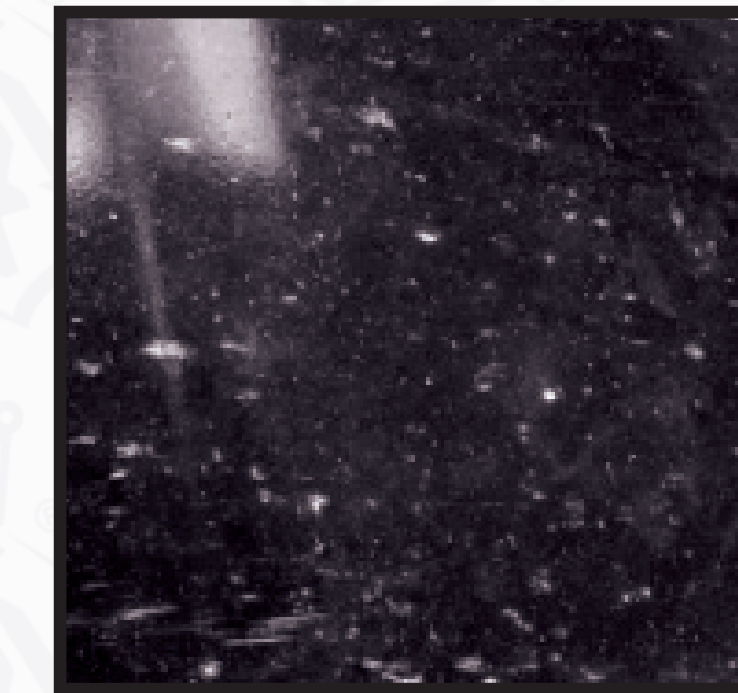
DEEP SCRATCHES
CAUSED, FOR EXAMPLE, BY JEANS BOTTOMS



HOLOGRAMS
CAUSED BY A WRONG POLISHING



LIMESCALE
CAUSED BY BIRD'S GUANO OR ACID RAINS



CONTAMINATIONS
RESIN, SAND, TAR, RUST



POLISHING
€ 1-2 HOURS

CORRECTION STEP 1
€€ 6-8 HOURS

CORRECTION STEP 2
€€€ 8-16 HOURS

CORRECTION STEP 3
€€€€ 16-32 HOURS

